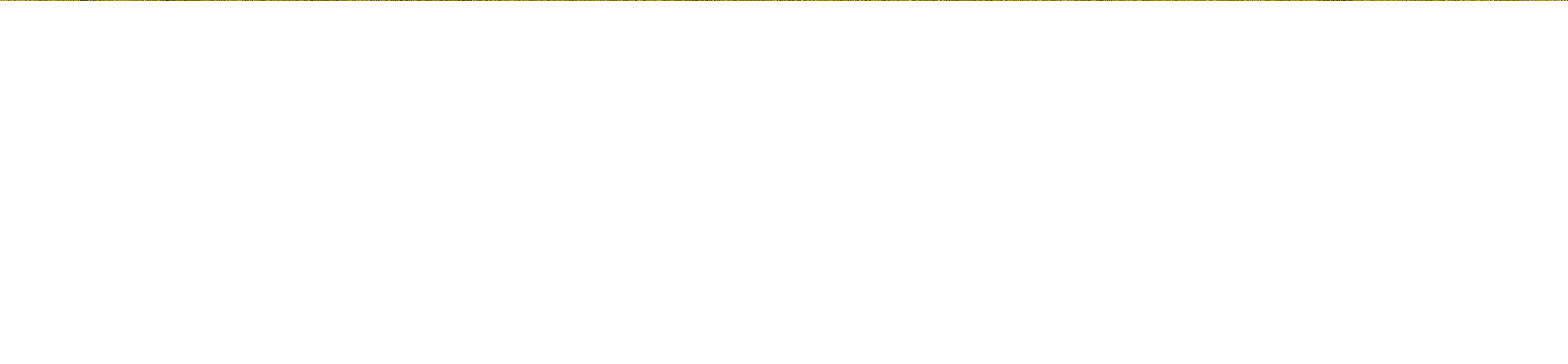


FLUSHING FARM

— CAIRNBULG —



CLAYMORE
— HOMES —



Welcome to

Flushing Farm

Claymore Homes currently have an exciting plot available at Cairnbulg with views out to sea and Fraserburgh Bay.



HOMES AS INDIVIDUAL AS YOU

Established in 2007, Claymore Homes is one of the North-East of Scotland's most trusted, independent property development companies. We believe the key to our success is offering our customers a wide range of homes, which are tailor-made to suit individual requirements, lifestyle and budget.

The Claymore name is a stamp of quality that guarantees exceptional service and premium craftsmanship. Attention to detail is consistent across every home. Our management have on average of over 30 years' experience within the building sector.

No two homes are the same. The Claymore custom design service places the customer at the heart of the process. From finishings and room layouts for first time buyers to designing a new home from scratch for the premium customer.





Flushing Farm

An awe-inspiring 5 bedroom home on an exclusive coastal plot.

PLOT PRICE - OFFERS OVER £225,000

BUILD PRICE - ON APPLICATION

Living Area	293m ²
Garage	Double (Integral)
Garage Area	49m ²

We are delighted to offer this rare opportunity to purchase this generous plot, benefiting from a pleasant outlook with direct views out to sea and outline planning permission for a private dwelling. With the option to have Claymore Homes provide a full design and build service, this site is suited to those looking for a luxury home.

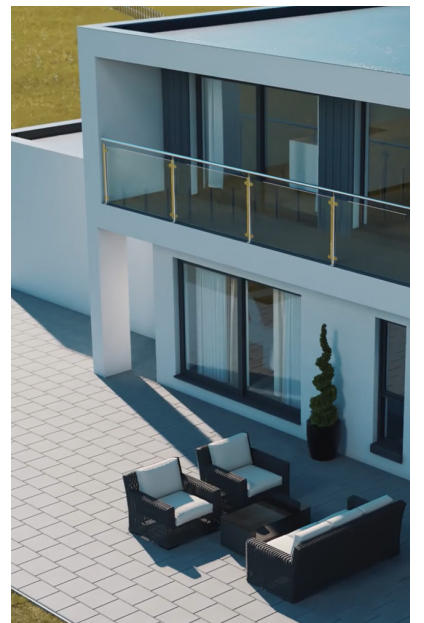
GROUND FLOOR



FIRST FLOOR



(Please note this information is for guidance only and does not form part of any contract and is subject to change.)



Beauty inside and out



**Quality design and materials all
come as standard**

We are delighted to offer our customers exclusive access to a full range of superior quality German kitchens. Our expert designers will assist you in selecting your dream kitchen and bathrooms to match your lifestyle and budget.





Kitchens

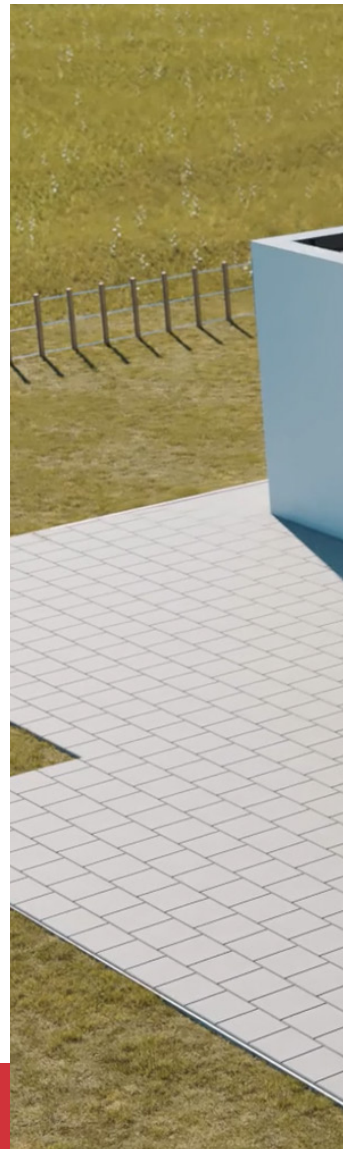
Everything is your choice. Starting with the kitchen layout, door colour/finish, worktop type/colour, the appliances you need, right down to the fine details.

Bathrooms

With a wide range of sanitary ware, showers, taps and vanity units your bathrooms are all covered too. We have a vast selection of products giving you the chance to find the right ones for you.

Flooring

We also supply flooring on request. We have range of laminate, click-in vinyl and tiles to choose from. A quote can be provided to lay the flooring meaning everything is ready for you to move into, just ask our team.





Contact us

We aim to provide you with great customer service and support, throughout the home-buying process and beyond. If you have any questions we're here to help.

Aden Business Park,
Newlands Rd, Mintlaw AB42 5BP

Sales Office: 01779 821115
Email: sales@claymorehomes.co.uk

www.claymorehomes.co.uk

PLEASE NOTE THIS INFORMATION IS FOR GUIDANCE ONLY AND DOES NOT FORM PART OF ANY CONTRACT AND IS SUBJECT TO CHANGE.



CLAYMORE
— HOMES —

www.claymorehomes.co.uk